



UNLEASH THE COLOR™

PREMIUM CUSTOM FINISHES



Refinish



The Hot Hues™ palette of premium custom finishes from DuPont can transform your vehicle into a unique work of art.

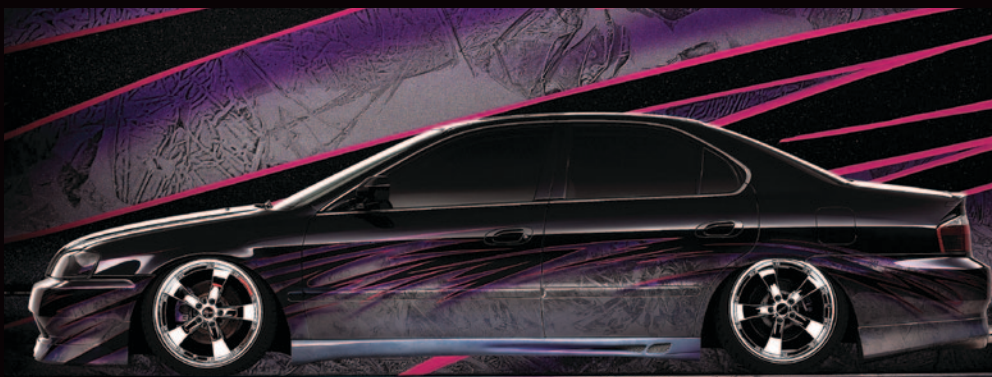
And because Hot Hues unleashes a wide array of colors and effect finishes, you're sure to find one—or two, or three—to reflect the way you feel about your vehicle.

So no matter what you drive, Hot Hues can help you define a look that's all your own.

For more information, call or visit online:

1.800.GET.DUPONT

hothues.dupont.com



SPECIALTY PRODUCTS



Hot PinStripe Efx™

Hot Hues™ Hot PinStripe Efx™ products add the perfect finishing touch to any custom project. Available in 27 solid and metallic colors, they provide exceptional coverage and brushability, along with clearcoat compatibility. Hot PinStripe Efx™ products are available in convenient 4-oz. and 8-oz. cans. The activator and reducer are offered in pint cans.



Hot Efx™ Brilliantz™

This unique product utilizes diffractive pigments to display smooth, satin-like rainbow colors at any viewing angle and creates a three-dimensional appearance with the illusion of “movement.” This effect is not possible with other special effects materials. Hot Efx™ Brilliantz™ offers a sophisticated, elegant and dramatic visual appeal that is unique, durable, and offers infinite styling opportunities.



Hot Candy Colors

Hot Candy Colors concentrated dye offering provides the most vivid and saturated colors with superior purity, clarity and brightness when used with any Hot Colors Basecoat. Available in 8 vibrant colors: Lazer Blue, True Blue, Hot Raspberry, Apple Red, Molten Orange, Golden Honey, Lemon Mist and Irish Green. Used alone or mixed together, Hot Candy Colors allow the painter to create unique custom candy colors.



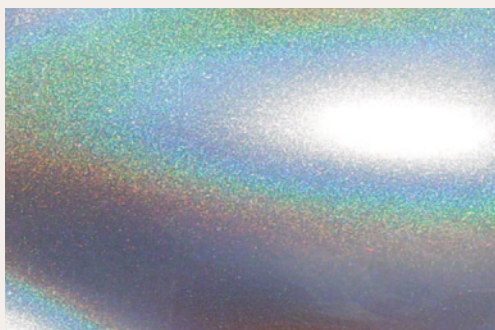
Hot Intercoat Adhesion Promoter HMM-6222™

This product is designed to protect custom graphics and artwork from tape marks, and it can be used as a blender for smooth tapering of pearls and candy colors. It can be sanded or left as sprayed for multiple layer graphic applications.

DuPont Powder Pearls

Available in pearl and xirallic colors, DuPont Powder Pearls provide a bright and clean appearance. With unexpected glitter and sparkle, these colors are more brilliant in appearance than other pigments. Powder Pearls are available in the following pearl and xirallic colors:

White Pearl 1001S™	Green Pearl 1009S™
Red Pearl 1002S™	Orange Pearl 1013S™
Blue Pearl 1004S™	Crystal Silver 1020S™
Gold Pearl 1005S™	Glitter Gold 1021S™
Copper Pearl 1006S™	Radiant Red 1023S™
Violet Pearl 1007S™	Shimmer Blue 1024S™



Hot Efx™ Brilliantz™ in silver



Hot PinStripe Efx™

PRODUCT FAMILY OVERVIEW

BASECOATS



Hot Basecoat Colors

Hot Hues™ Basecoats are high-performance, high-productivity, basecoat colors with outstanding jetness that bring a new level of productivity to premium custom projects. As high-hiding basecoats, Hot Colors lay down smoothly, with trouble-free application and excellent mottle control. Designed for use with Hot Hues Binder HH-6200™, Hot Hues Balancer HH-6300™ and DuPont Activator for a superior appearance. Available in factory-packaged colors and numerous mixing colors.



Hot Hues Binder

HH-6200™

Hot Hues Balancer

HH-6300™

Hot Hues Binder and Hot Hues Balancer provide better film toughness and durability for an even stronger basecoat appearance—on the road or at the show. With improved reactivity, this binder and balancer help to deliver better overall paint system performance by improving the way Hot Basecoat Colors apply and handle.



Hot Rod Black HHM-6400™

Hot Rod Black is a 2K topcoat with excellent satin gloss and color retention. It offers high mechanical and chemical resistance, and infrared or low bake are possible. DuPont Activators and Reducers can be used with Hot Rod Black to achieve the ideal results based on shop requirements. For stripes or completes, Hot Rod Black is an ideal choice. It will not chalk or fade, so you can do it once, do it right—and go cruising.

UNDERCOATS

DuPont™ ChromaPremier® 32430S™ 2K Premier Primer

ChromaPremier® 32430S™ 2K Premier Primer is a three-component, high-build, easy-to-sand primer for premium quality spot, panel and overall projects. This easy-to-handle primer uses ChromaPremier® activators and reducers to provide excellent fill and holdout in a wide range of application conditions.

DuPont™ ChromaFil® 3250S™ 2.1 VOC High Build Uro® Primer

ChromaFil® 3250S™ 2.1 VOC High Build Uro® Primer is designed for shops that require a high-build, easy-to-apply and easy-to-sand primer-filler. DuPont™ ChromaFil® 3250S™ 2.1 VOC High Build Uro® Primer is a heavy-duty mainstream workhorse primer-filler that provides excellent fill capacity, and is the foundation for high-quality work.

DuPont™ ChromaPremier® 2K Premier Sealer

ChromaPremier® 42400S™ / 42410S™ / 42440S™ / 42470S™ 2K Premier Sealer is a three-component, high-performance sealer for premium-quality spot, panel and overall projects. It provides excellent leveling and topcoat holdout. For added productivity, this sealer allows you the option of “finesse” finish sanding. This sealer uses DuPont® ValueShade™ technology to promote faster topcoat hiding in fewer coats, plus better matches.



Refinish

Hot Hues™ is designed to work with the DuPont Refinish line of products. Compatible undercoats, clearcoats, activators and reducers allow you the ability to have an integrated system approach.



CLEARCOATS

DuPont™ ChromaPremier® 72200S™ Premium Productive

ChromaPremier® 72200S™ Premium Productive Clear is a high-solids, three-component urethane clear for productive premium-quality spot, panel and multi-panel projects.

DuPont™ ChromaPremier® 72500S™ Premium Appearance Clear

ChromaPremier® 72500S™ is a high-solids, three-component urethane clear that delivers unsurpassed appearance for premium-quality panel, multi-panel and overall projects.

DuPont™ ChromaClear® 2370S™ Flexible Matted Clearcoat

ChromaClear® 2370S™ is a versatile two-component matted clearcoat designed to achieve a semi-gloss appearance over an original manufacturer or custom mixed base/clear finish.

DuPont™ ChromaClear® HC-2300S™ Clearcoat with Hyper Cure™ - Air Dry

ChromaClear® HC-2300S™ is a 2.1 VOC air dry/low bake clear that has lower overspray and fast, dust-free attributes. It is a two-component spot and panel clear designed to maximize energy savings and increase speed.

UNIVERSAL

DuPont™ ChromaPremier® 12305S™ Activator

ChromaPremier® 12305S™ Activator provides a superior and durable finish for any type of project.

DuPont™ ChromaPremier® 12385S™ Slow Reducer

ChromaPremier® 12385S™ Slow Reducer is formulated to work specifically with our primers, surfacers, basecoats and top coats. Works well in hot conditions or for large areas of coverage.





UNLEASH THE COLOR™

For more information or to locate a
Hot Hues Authorized Distributor
in your area, visit us at:

hothues.dupont.com

In the U.S., call 1.800.GET.DUPONT
In Canada, call 1.800.668.6945

